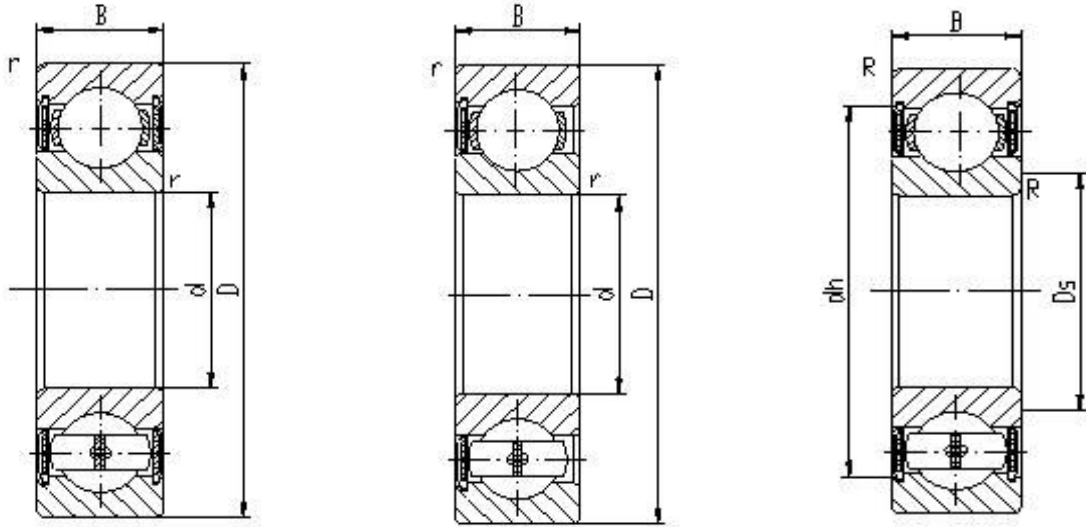


深沟球-带密封圈



基本尺寸				基本额定载荷		极限转速	轴承代号	安装相关尺寸				重量
d	D	B	rsmin	Cr	Cor	脂润滑		Dsmin	Dsmax	dhmax	Rmax	
100	150	24	1.5	62.4	52.9	2600	6020-2RS	108		142	1.5	1.21
100	180	34	2.1	122	93	2400	6220-2RS	111		169	2	3.27
100	180	34	2.1	115	88	2400	6220-2RS/CRA9	111		169	2	3.37
100	215	47	3	173	141	2800	6320-2RS	113		202	2.5	7.19
105	160	26	2	73	62.8	2400	6021-2RS	114		151	2	1.67
105	190	36	2.1	135	102	3200	6221-2RS	117		178	2	3.87
105	225	49	3	240	154	2800	6321-2RS	119		211	2.5	8.15
110	140	16	1	26.7	28.2	2600	61822-2RS2/S3YA7	115		135	1	0.517
110	170	28	2	82	70.6	2400	6022-2RS	119		161	2	1.98
110	200	38	2.1	145	114	3000	6222-2RS	122		188	2	4.62
110	240	50	3	195	167	2600	6322-2RS	124		226	2.5	9.77
12	28	8	0.3	5.18	2.26	26000	6001-2RS	14	14.5	26	0.3	0.0228
120	165	22	1.1	48.6	50.5	3900	FL-61924-2RS/P5	126		129	1	1.2
120	180	28	2	85.5	80	2200	6024-2RS	129		171	2	2.24
120	215	40	2.1	154	130	2100	6224-2RZ	132		203	2	5.33
120	215	40	2.1	155	132	2800	6224-2RS/YB2	132		203	2	5.43
120	215	40	2.1	154	130	2800	6224-2RS	132		203	2	5.33
120	260	55	3	217	196	2000	6324-2RS	134		246	2.5	12.7
130	165	18	1.1	33	37.7	3800	FL-61826-2RS/P5	136		159	1	0.816
130	200	33	2	109	98	3200	6026-2RS	139		191	2	3.33
130	230	40	3	153	134	2600	6226-2RZ/Z1	144		216	2.5	6.4
130	230	40	3	153	134	2600	6226-2RS	144		216	2.5	6.4

14	47	14	1	13.6	6.6	11000	6303-2RS	19		42	1	0.114
140	250	42	3	166	150	2400	6228-2RZ/Z1	154		236	2.5	7.52
140	250	42	3	166	150	2400	6228-2RS	154		236	2.5	7.52
150	225	35	2.1	123	117	1600	6030-2RS	161		214	2	4.05
150	270	45	3	189	183	2000	6230-2RS	164		256	2.5	10.1
160	240	38	2.1	143	138	1600	6032-2RS	169		231	2	5.11
17	40	12	0.6	9.55	4.8	12000	6203-2RS	21	24	36	0.6	0.0651
17	40	14	1	9.6	4.6	12000	6203X2- FS/YA6	22	21	35	1	0.0769
18	75	16	1	20	14	5500	60/18- 2RSN/YAD	24.5	51.3	68.5	1	0.365
180	320	52	4	240	260	1800	6236-2RS	197		303	3	15
180	320	52	4	240	260	1800	6236-2RZ/Z1	197		303	3	15
190	290	46	2.1	194	204	2000	6038-RS	200		280	2	9.13
20	47	14	1	13	6.7	10000	6204-2RS	25.6		41.4	1	0.121
20	47	14	1	13	6.7	15000	6204-2RZ	25.6		41.4	1	0.11
22	56	16	1.1	18.4	9.25	13000	63/22- 2RS/C3-SAGW	29	30.8	49	1	0.183
25	37	7	0.3	3.6	2.64	17000	61805-2RZ	27		35	0.3	0.022
25	47	12	0.6	10.6	5	9500	6005-2RS	29	31	43	0.6	0.0787
25	47	12	0.6	11.4	6.28	13000	6005-2RZ	28.2		43.8	0.6	0.0787
25	47	12	0.6	11.4	6.28		6005-2Z	29		43	0.6	0.0783
25	47	12	0.6	11.4	6.28	13000	6005-Z	29		43	0.6	0.0769
25	52	15	1	14.3	8	8500	6205-2RS	30		47	1	0.13
25	52	15	1	14.3	8	8500	6205-2RZ	30		47	1	0.125
25	52	15	1	14.3	8	8500	6205-RS2	30		47	1	0.13
25	52	15	1	14.3	8	8500	6205-RS	30		47	1	0.13
25	52	15	1	14.3	8	8500	6205-2RS2	30		47	1	0.13
25	52	15	1	14.3	8	8500	6205-2RS/FR	30		47	1	0.13
25	62	17	1.1	22.4	11.5	7500	6305-2RS	31.5		55.5	1	0.232
25	62	17	1.1	22.4	11.5	7500	6305-RS	31.5		55.5	1	0.223
25	62	17	0.4	22.4	11.5	7500	6305TN1- 2RS/YA6	32		55	1	0.211
25	62	17	1.1	22.4	11.5	7500	6305-2RZ	32		55	1	0.222
25	68	18	1.1	20.2	12.9	7500	6305X3/C3YA 5	32		61	1	0.296
25.5	58	16	1	20.5	11.1	11000	66/25.5- 2RS-BYD	31		52.5	1	0.177
25.5	58	16	1	20.5	11.1	11000	66/25.5- 2RS/P53Z2	31		52.5	1	0.186
28	68	18	1.1	32.5	13	6300	63/28-RS/HA	34.5		61.5	1	0.305
28	68	18	1.1	25	13.9	6300	63/28- 2RS1/C3-DZ	34.5	39.5	61.5	1	0.301
28	68	18	1.1	23.6	13.1	6300	63/28-2RS- DZ	34.5		61.5	1	0.302
28	68	18	1.1	23.5	13	6300	63/28-RS	34.5		61.5	1	0.3
30	55	13	1	13.2	7.96	8000	6006-2RS	35		50	1	0.118
30	55	13	1	13.2	7.96	12000	6006-2RZ	34.6		50.4	1	0.118
30	62	16	1	19.5	11.3	10000	6206-RS	35		56	1	0.212
30	62	16	1	19.5	11.3	10000	6206-2RS	35		56	1	0.214
30	62	16	1	19.5	11.3	10000	6206-2RS-DZ	35		56	1	0.214

30	62	16	1	19.5	11.3	10000	6206-RS2	35		56	1	0.212
30	62	16	1	19.5	11.3	10000	6206-2RZ	35	38	56	1	0.224
30	62	16	1	19.5	11.3	10000	6206-2RS1/C3-DZ	35	38	56	1	0.2
30	62	20	1	19	11	10000	62206-2RS	35	38	56	1	0.255
30	72	19	1.1	28.4	15.4	6300	6306-2RS	36.5	41.5	65.5	1	0.355
30	72	19	1.1	28.4	15.4	6300	6306-RS	36.5	41.5	65.5	1	0.353
30	72	19	1.1	28.4	15.4	6300	6306-2RZ	36.5	41.5	65.5	1	0.355
30	72	19	1.7	28.4	15.4	6300	6306-2RZ/YA6	36.5	41.5	65.5	1	0.355
30	72	19	1.7	28.4	15.4	6300	6306-2RS/YA6	36.5	41.5	65.5	1	0.338
30	75	20	0.5	25.3	17.5	6300	6306X3-2RSN/Y	36.5		68.5	0.5	0.475
30	75	20	0.5	32.5	18	9000	450706K	36.5		68.5	0.5	0.474
32	80	23	0.5	36.5	20	9000	4507/32KU	37.5		72.5	0.5	0.534
32	72	25	1	26.7	15	9400	66/32WB1-2RSZ/C9	39		69.5	1	0.408
32	75	20	1.5	22	16	8800	63/32-2RSN	41.5		65.5	1.5	0.413
32	80	23	0.5	27.9	19.6	8400	63/32X3-2RSN/C9Y	37.5		72.5	0.5	0.534
32	80	23	0.3	36.5	19.6	8400	63/32X3-2RSN/HAY	35		77	0.3	0.534
35	64	14	1	16	10.3	7000	6007X1-2RS/C3	39.6		57.4	1	0.196
35	72	25	1.1				1-0003				1.1	0.543
35	62	14	1	16	10.3	7000	6007-2RZ	39.6		57.4	1	0.169
35	62	14	1	16	10.3	7000	6007-2RS	39.6		57.4	1	0.175
35	72	17	1.1	26	14.7	6300	6207-RS	41.5		65.5	1	0.296
35	72	17	1.1	26	14.7	6300	6207-RS2	41.5		65.5	1	0.296
35	72	17	1.1	26	14.7	6300	6207-2RS2	41.5		65.5	1	0.299
35	72	17	1.1	26	14.7	6300	6207-2RS	41.5		65.5	1	0.299
35	72	17	1.1	26	14.7	6300	6207SC-2RS	41.5		65.5	1	0.401
35	80	21	1.5	33.4	19.2	6000	6307-RS	43		72	1.5	0.48
35	80	21	1.5	33.4	19.2	6000	6307-2RS	43		72	1.5	0.491
40	68	15	1	16.8	11.6	6300	6008-2RS	44.6		63.4	1	0.206
40	80	18	1.1	31.2	18.2	5600	6208-RS	46.5	50.5	73.5	1	0.385
40	80	18	1.1	31.2	18.2	5600	6208-RS2	46.5	50.5	73.5	1	0.385
40	80	18	1.1	31.2	18.2	5600	6208-2RS	46.5	50.5	73.5	1	0.408
40	80	21	1.1	31.2	18.2	5600	62208X2WB-2RS/P53	46.5	50.5	73.5	1	0.525
40	90	23	1.5	41	24	5000	6308-RS	48		82	1.5	0.643
40	90	23	1.5	41	24	5000	6308-2RS	48		82	1.5	0.641
40	90	23	1.5	41	24	7500	6308-2RZ	48		82	1.5	0.643
40	85	22	1.5	32.5	20.4	5000	6308X3-2RS	48		78	1.5	0.704
40	109.5	31	1.5	41	24	5000	6308X3-2RS/YA6	48		82	1.5	1.48
40	110	27	2	67.5	36	6700	6408-2RS/YA5	49		101	2	1.3
45	75	16	1	20	14	5600	6009-RS	50		70	1	0.245
45	75	16	1	20	14	5600	6009-RS2	50		70	1	0.245
45	75	16	1	20	14	5600	6009-2RS	50		70	1	0.25

45	75	16	1	20	14	5600	6009-2RS/FR	50		70	1	0.25
45	85	19	1.1	33.7	20.7	5300	6209-RS	51.5		78.5	1	0.441
45	85	19	1.1	33.7	20.7	7500	6209-2RZ	51.5		78.5	1	0.442
45	85	19	1.1	33.7	20.7	5300	6209-RS2	51.5		78.5	1	0.435
45	85	19	1.1	33.7	20.7	5300	6209-2RS	51.5		78.5	1	0.442
45	85	19	1.1	33.7	20.7	5300	6209-2RSK	51.5		78.5	1	0.433
45	85	21	1.1	33.7	20.7	5300	62209X2WB-2RS/P53	51.5		78.5	1	0.544
45	100	25	1.5	52.5	30	4500	6309-2RS	53		92	1.5	0.861
45	100	25	1.5	52.5	30	4500	6309-RS	53		92	1.5	0.853
45	100	25	1.5	48.5	29.5	7000	6309-2RZ	53		92	1.5	0.861
45	127	31.5	1.5	48.5	29.5	4500	6309X3-2RS/YA6	53		112	1.5	2.04
45	100	36	1.5	51	31	4500	62309-2RS	53		92	1.5	1.15
50	65	7	0.3	5.85	5.69	8100	FL-61810-2RS/P6	53		62	0.3	0.0552
50	72	12	0.6	13.4	11.2	9900	FL-61910-2RS/P5	54		68	0.6	0.135
50	80	16	1	22	16.3	5000	6010-2RZ	54.6		75.4	1	0.255
50	80	16	1	22	16.3	5000	6010-2RS	54.6		75.4	1	0.258
50	90	20	1.1	35.6	22.3	4800	6210-2RS	56.5		83.5	1	0.498
50	90	33	1.1	35.6	22.3	4800	62210X2-XRS2	57		83	1	0.727
50	110	27	2	62	38	4800	6310-2RS	59	63	101	2	0.926
50	110	27	2	62	38	4800	6310-2RS/HAC3V2Y A7	59	63	101	2	1.07
50	110	27	2	62	38	4800	6310TN1-2RZ/C4L	59	63	101	2	1.08
50	163	46	2	57.5	35	4600	6310X3-2RS	67.5	96	2	4100	5.84
55	90	18	1.1	29	20.7	4500	6011-2RS	61		84	1	0.389
55	100	21	1.5	44.3	27.8	4300	6211-2RS	63		92	1.5	0.653
55	120	29	2	71.5	45	3800	6311-2RS	64		111	2	1.37
55	120	29	2	71.5	45	3800	6311-RS	64		111	2	1.38
55	120	49.2	2	71.5	45	3800	63311TN1-2RZ/C3H	64		111	2	2.19
55	120	49.2	2	67	42	3800	63311-2RZ/C3L	66		109	2	2.27
55	140	33	2.1	89	54	3600	6411-2RS/YA5	66		129	2	2.45
60	95	18	1.1	30	23	4300	6012-2RS	66.5		88.5	1	0.446
60	95	18	1.1	30	23	4300	6012-RS	66.5		88.5	1	0.43
60	95	18	1.1	30	23	4300	FL-6012-2RS	66.5		88.5	1	0.446
60	95	18	1.1	30	23	4300	FL-6012/C3	66.5		88.5	1	0.416
60	95	18	1.1	30	23	4300	FL-6012/P6	66.5		88.5	1	0.416
60	110	22	1.5	53	36	4000	6212-2RS	68		102	1.5	0.78
60	110	22	1.5	53	36	4000	6212-2RS/HAC3V2Y A7	68		102	1.5	0.788
60	110	22	1.5	53	36	4000	6212WB-2RS/P53	68		102	1.5	0.974
60	110	22	1.5	53	36	4000	6212/HAC3YA B-2RSZ	68		102	1.5	0.928

60	110	22	1.5	53	36	4000	6212-2RS2/HAYA57	68		102	1.5	0.792
60	110	22	1.5	53	36	4000	6212-2RS2	69		101	1.5	0.78
60	110	22	1.5	53	36	5500	FL-6212-2RS/P6	69		101	1.5	0.8
60	130	31	2.1	82	48.5	3400	6312-2RS	71		119	2	1.75
60	130	31	2.1	82	48.5	3400	6312-RS	71		119	2	1.76
60	130	31	2.1	77	49	5200	6312-2RZ	71		119	2.1	1.75
65	85	10	0.6	11.9	11.5	6300	FL-61813-2RS/P6	69		81	0.6	0.129
65	90	13	1.1	16	15	7800	FL-61913-2RS/P5	71.5		83.5	1	0.212
65	100	18	1.1	32	25	4000	6013-2RS	71		94	1	0.444
65	120	23	1.5	57	40	3500	6213-2RS	73		112	1.5	1.07
65	120	23	1.5	57	40	3500	6213-2RSR/C3Z1YA6	73		112	1.5	1.14
65	140	33	2.1	95	59.5	3200	6313-2RS	76		129	2	2.36
65	140	33	2.1	95	59.5	3200	6313-RS	76		129	2	2.25
65	140	33	2.1	95	59.5	3200	6313-2RZ	77		128	2	2.36
70	110	20	1.1	38	30	3600	6014-2RS	76.5		103.5	1	0.623
70	125	24	1.5	61.2	43.2	3400	6214-2RS	78		117	1.5	1.14
70	130	41	1.5	61	45	3200	180714	78.5		121.5	1.5	2.05
70	130	41	1.5	61	45	3200	63214X3-2RS	78.5		121.5	1.5	2.05
70	150	35	2.1	107	68	3000	6314-2RS	81		139	2	2.6
70	150	35	2.1	107	68	3000	6314-RS	81		139	2	2.62
70	150	35	2.1	107	68	3000	6314-2RZ	82		138	2	2.6
75	115	20	1.1	40	32.2	3400	6015-2RS	81		108.5	1	0.604
75	115	20	1.1	40	32.2	3400	6015-2RZ	81		109	1	0.604
75	130	25	1.5	66	50	3200	6215-2RS	83		122	1.5	1.23
75	130	25	1.5	66	50	4500	FL-6215-2RS/P6	83		122	1.5	1.23
75	130	25	1.5	61	46	3200	6215-2RZ	84		121	1.5	1.23
75	130	25	1.5	61	46	3200	6215-2RS/HAC3V2YA7	84	88	121	1.5	1.18
75	160	37	2.1	113	71	2800	6315-2RS	87		148	2	3
80	125	22	1.1	47.5	40	3200	6016-2RS	86.5		118.5	1	0.856
80	125	22	1.1	47.5	40	3200	6016-2RZ	86		119	1	0.856
80	140	26	2	71.5	54.5	3000	6216-2RS	89		131	2	1.51
80	170	39	2.1	125	86.5	2600	6316-RS	91		159	2	3.71
80	170	39	2.1	125	86.5	2600	6316-2RS	91		159	2	3.75
85	130	22	1.1	47.5	40	3000	6017-2RS	91.5		123.5	1	0.966
85	150	28	2	84	62	2800	6217-2RS	94		141	2	1.81
85	180	41	3	102	96.5	2400	6317-RS	98		167	2.5	4.32
85	180	41	3	102	96.5	2400	6317-2RS	98		167	2.5	4.35
85	180	41	3	133	96.5	2400	6317-2RZ	99		166	2.5	4.35
90	140	24	1.5	58.5	50	2800	6018-2RS	98		132	1.5	1.18
90	160	30	2	97	72	2600	6218-2RS	101		149	2	2.25
90	190	43	3	144	108	2400	6318-2RS	104	114	176	2.5	5.1
95	145	24	1.5	60.5	54	2800	6019-2RS/C3	102		138	1.5	1.17

95	170	32	2.1	110	80	2400	6219-2RS	106		159	2	2.69
95	200	45	3	152	118	2400	6319-RS	108		187	2.5	5.68
95	200	45	3	152	118	2400	6319-2RS	108		187	2.5	5.92